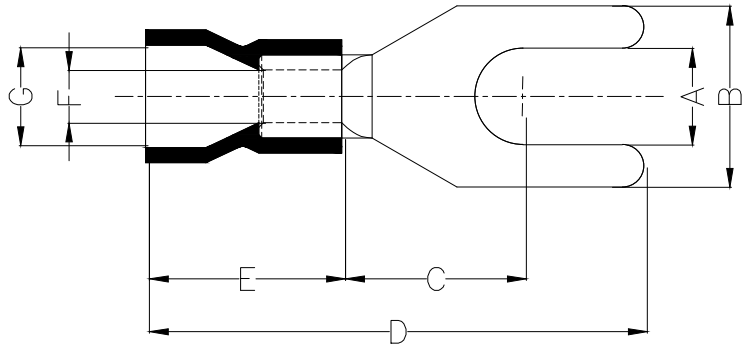
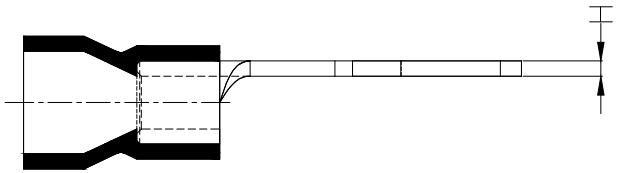


1 2 3 4 5 6 7 8

REV	LOCATIONS	DESCRIPTION	DATE	REVISER	APPD

Notes:

Material: Copper  
 Insulator: PVC (UL 94V-0) Yellow  
 Plating: Matte tin plated  
 Wire range: 4~6mm<sup>2</sup> / (12~10AWG)  
 Applicable screw: 1/4" UNC  
 Temperature Range-Operating: 0°C~75°C  
 Maximum electrical rating: 600V  
 Max current: 48A



PART NO.	Dimensions							
	A ±0.3	B ±0.5	C ±1	D ±1	E ±1	F ±0.5	G ±0.5	H ±0.05
FYT03-00550060SAYE2	6.4	9.0	7.5	25.5	13.0	3.4	6.5	1.0

<p>THIRD ANGLE PROJECTION</p>	GENERAL TOLERANCES (UNLESS SPECIFIED)		APPROVE BY	DATE	PART NO.	ITEM NO.	<p>Building Technology Cornerstone</p>
	X. ±0.30	X.* ±5'	LEO	10/JAN/21	FYT03-00550060SAYE2	FYT03	
	X.X ±0.20	X.X' ±2'	CHECKED BY	DATE	TITLE		
	X.XX ±0.15	X.XX' ±1'	GISELLE	10/JAN/21	Spade tongue terminal		
SCALE	SIZE	X.PYD ±0.10	X.PYD' ±0.5'	DRAWN BY	DATE	THIS DRAWING CONTAINS INFORMATION THAT IS PROPRIETARY TO TXGA INDUSTRIAL ELECTRONICS(S.Z)CO.,LTD AND SHOULD NOT BE USED WITHOUT WRITTEN PERMISSION	
5:1	A4			PYD	10/JAN/21	REV 0	SHEET NO. 1/1

1 2 3 4 5 6 7 8